

# ALL-O-MATIC



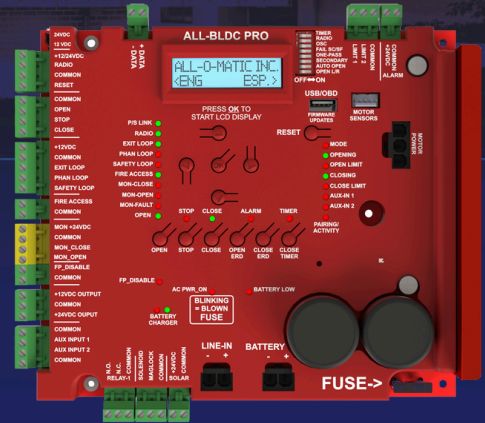
**Power Door Products**  
(914) 698-5083  
www.PowerDoorProducts.com

allomatic.net

## SL-90DC PRO

SLIDE GATE OPERATOR

## ALL-BLDC PRO CONTROL BOARD

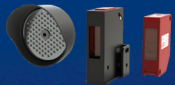


### ALL-BLDC PRO FEATURES

- ✓ LCD DISPLAY WITH ON BOARD DIAGNOSTICS
- ✓ AUTO CLOSE TIMER & OBSTRUCTION SENSING DIGITAL ADJUSTMENTS
- ✓ INTEGRATED WIRELESS PRIMARY/SECONDARY
- ✓ PARTIAL OPEN OPTION
- ✓ PROGRAMMABLE AUXILIARY INPUTS
- ✓ USB PORT TO EXTRACT DIAGNOSTIC DATA AND FIRMWARE UPDATES
- ✓ BUILT-IN VOLT METER THROUGH LCD DISPLAY
- ✓ CYCLE COUNTER AND MUCH MORE



MECHANICAL  
FOOT PEDAL  
RELEASE



AOM-RED EYE  
INCLUDED



RESIDENTIAL

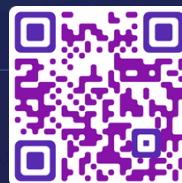


COMMERCIAL

SLIDERS | SWINGERS | OVERHEADS

The standard by which all other automatic gate operators are measured.

SCAN FOR  
PRODUCT  
INFORMATION



UL 325 2018  
COMPLIANT

UL 991  
COMPLIANT

CSA C22.2 #247

# ALL-O-MATIC

## SL-90DC PRO

### SLIDE GATE OPERATOR



**Power Door Products**  
(914) 698-5083  
www.PowerDoorProducts.com

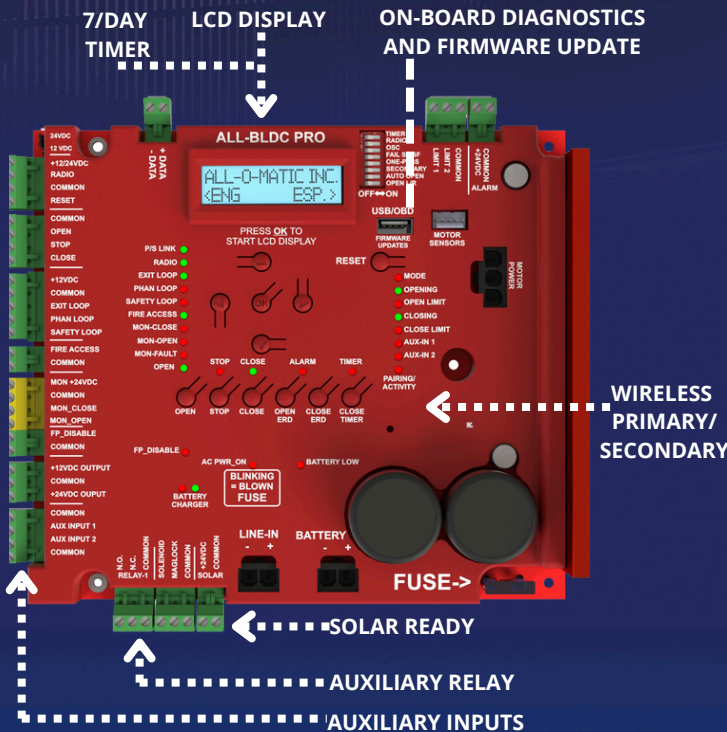
allomatic.net



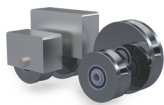
SCAN FOR  
PRODUCT  
INFORMATION

## SPECS

<b>Max Gate Weight</b>	1,600 lbs.
<b>Max Gate Length</b>	50 feet
<b>Warranty</b>	7 year residential - 5 year commercial
<b>Motor</b>	24 VDC brushless – ½ HP motor
<b>Gate Speed</b>	Adjustable 6"-12" per second
<b>Power Options</b>	115/230 VAC single phase and 24 VDC solar panel
<b>Duty Cycle</b>	Continuous
<b>Battery Backup</b>	Integrated, with (2) 7Ah 12VDC batteries.
<b>Battery CYCLES</b>	150 cycles on a 1,000 lb. gate
<b>Temp. Range</b>	-40 to 160°
<b>Gearbox Ratio</b>	20:1 with internal disconnect
<b>W X L X H</b>	15.5" X 18.5" X 16"
<b>Shipping Wt</b>	95 lbs.
<b>Emergency Release</b>	Mechanical foot pedal release
<b>Belt Size</b>	4L-230 (AX21)
<b>Drive Sprocket</b>	41B22X7/8
<b>Chain Size</b>	41NP (20' included)
<b>Gearbox Sprocket</b>	41B12X7/8
<b>Limit Sprocket</b>	41B15X5/8
<b>Gearbox Pulley</b>	2 ½" with 5/8" bore
<b>Motor Pulley</b>	2" with 5/8" bore



### AVAILABLE ACCESSORIES



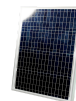
V-Groove  
Wheels



GUIDE  
Rollers



Fire  
Boxes



24V  
Solar  
Panel



PRIME VD-1  
Loop Detector

The Warrantor warrants the SL-90DC PRO Gate Operator. ALL-O-MATIC INC warrants its gate openers for a period of five (5) years in commercial installations, and for a period of seven (7) years in residential installation to be free from defects in circuitry, motor, gear box and workmanship. This warranty applies from the date of purchase to the original owner. Warrantor will repair or, at its option, replace any device which it finds to require service. This device must be sent to the warrantor at the consumer's expense. The warrantor will return the repaired or replaced unit to the customer at the consumer's expense. Labor charges for dealer service or replacement are the responsibility of the owner. These warranties are in lieu of all other warranties either expressed or implied, and ALL-O-MATIC INC shall not be liable for consequential damage. All implied warranties of merchantability and or fitness for a particular purpose are hereby disclaimed and excluded. This limitation is not valid in jurisdictions which do not allow limitation of incidental or consequential damages or limitation of warranty periods. Caution in order to obtain this policy, please complete the registration card and send it by mail within 30 days of purchasing from ALL-O-MATIC INC. or your INSTALLER. If not registered only a one year warranty on all parts will be provided.

The standard by which all other automatic gate operators are measured.

UL 325 2018 COMPLIANT    UL 991 COMPLIANT

CSA C22.2 #247