

ALL-O-MATIC



Power Door Products
(914) 698-5083
www.PowerDoorProducts.com

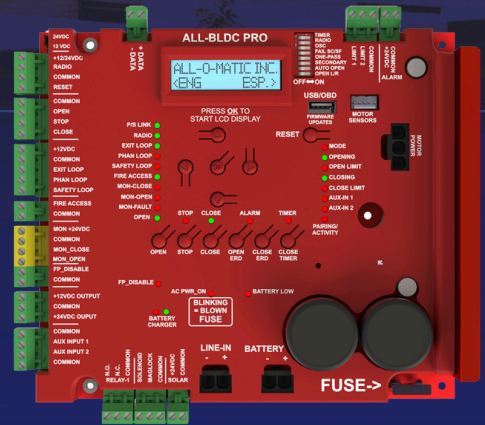
allomatic.net

SW-350DC PRO

SWING GATE OPERATOR

ALL-BLDC PRO

CONTROL BOARD



ALL-BLDC PRO FEATURES

- ✓ LCD DISPLAY WITH ON BOARD DIAGNOSTICS
- ✓ AUTO CLOSE TIMER & OBSTRUCTION SENSING DIGITAL ADJUSTMENTS
- ✓ INTEGRATED WIRELESS PRIMARY/SECONDARY
- ✓ PARTIAL OPEN OPTION
- ✓ PROGRAMMABLE AUXILIARY INPUTS
- ✓ USB PORT TO EXTRACT DIAGNOSTIC DATA AND FIRMWARE UPDATES
- ✓ BUILT-IN VOLT METER THROUGH LCD DISPLAY
- ✓ CYCLE COUNTER AND MUCH MORE



MECHANICAL
FOOT PEDAL
RELEASE



AOM-RED EYE
INCLUDED



RESIDENTIAL



COMMERCIAL

SLIDERS | SWINGERS | OVERHEADS

The standard by which all other automatic gate operators are measured.

SCAN FOR
PRODUCT
INFORMATION



UL 325 2018
COMPLIANT

UL 991
COMPLIANT

CSA C22.2 #247

ALL-O-MATIC

SW-350DC PRO

SWING GATE OPERATOR



Power Door Products
(914) 698-5083
www.PowerDoorProducts.com



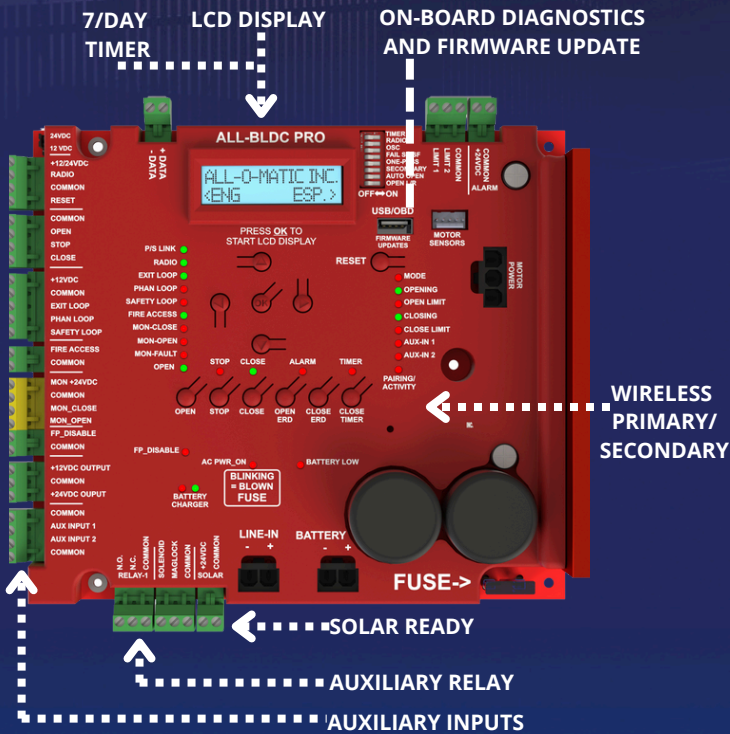
allomatic.net



SCAN FOR
PRODUCT
INFORMATION

SPECS

Max Gate Weight	½ HP: 2,000 lbs. 1 HP: 2,500 lbs.
Max Gate Length	22 feet
Warranty	7 year residential - 5 year commercial
Motor	24 VDC brushless – ½ HP and 1 HP motor
Gate Speed	Adjustable 16-29 seconds per 90° opening
Power Options	115/230 VAC single phase and 24 VDC solar panel
Duty Cycle	Continuous
Battery Backup	Integrated, with (2) 7Ah 12VDC batteries
Battery Backup Capacity	Up to 250 cycles
Temperature Range	-40 to 160°
Gearbox Ratio	60:1 with internal clutch
Width X Length X Height	14" X 24" X 18"
Shipping Weight	½ HP: 190 lbs. + 35 lbs. arm 1 HP: 205 lbs. + 35 lbs. arm
Emergency Release	Mechanical foot pedal release
Belt Size	4L-360 (AX34)
Main Sprocket Size	50B45X1.25
Chain Size	50NP
Gearbox Sprocket	50B11X1
Breaker Requirement	20 amp dedicated
Gearbox Pulley	7" with 3/4" bore
Motor Pulley	2" with 5/8" bore



AVAILABLE ACCESSORIES



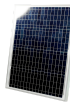
AML-1200B
Mag Lock



GH-1500
Hinges



Fire
Boxes



24V
Solar
Panel



PRIME VD-1
Loop Detector

The Warrantor warrants the SW-350DC PRO Gate Operator. ALL-O-MATIC INC warrants its gate openers for a period of five (5) years in commercial installations, and for a period of seven (7) years in residential installation to be free from defects in circuitry, motor, gear box and workmanship. This warranty applies from the date of purchase to the original owner. Warrantor will repair or, at its option, replace any device which it finds to require service. This device must be sent to the warrantor at the consumer's expense. The warrantor will return the repaired or replaced unit to the customer at the consumer's expense. Labor charges for dealer service or replacement are the responsibility of the owner. These warranties are in lieu of all other warranties either expressed or implied, and ALL-O-MATIC INC shall not be liable for consequential damage. All implied warranties of merchantability and or fitness for a particular purpose are hereby disclaimed and excluded. This limitation is not valid in jurisdictions which do not allow limitation of incidental or consequential damages or limitation of warranty periods. Caution in order to obtain this policy, please complete the registration card and send it by mail within 30 days of purchasing from ALL-O-MATIC INC. or your INSTALLER. If not registered only a one year warranty on all parts will be provided.

The standard by which all other automatic gate operators are measured.

UL 325 2018 COMPLIANT UL 991 COMPLIANT

CSA C22.2 #247